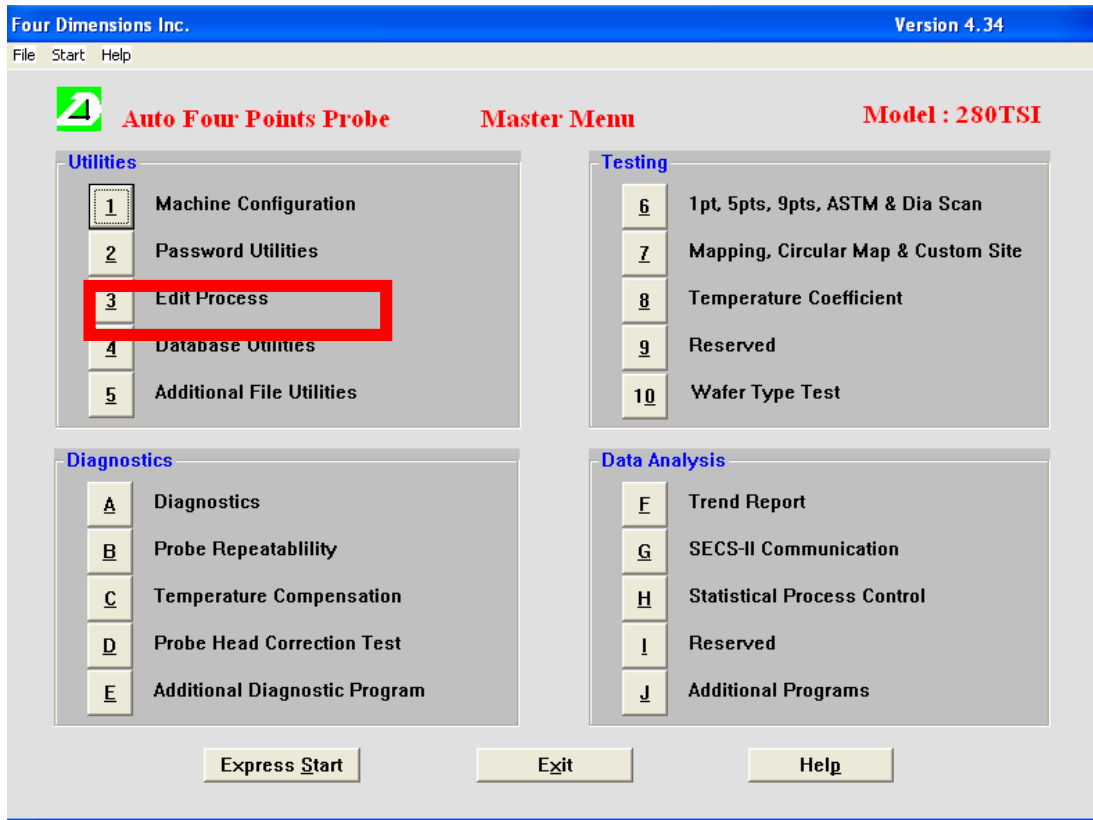


# Standard Operating Procedure

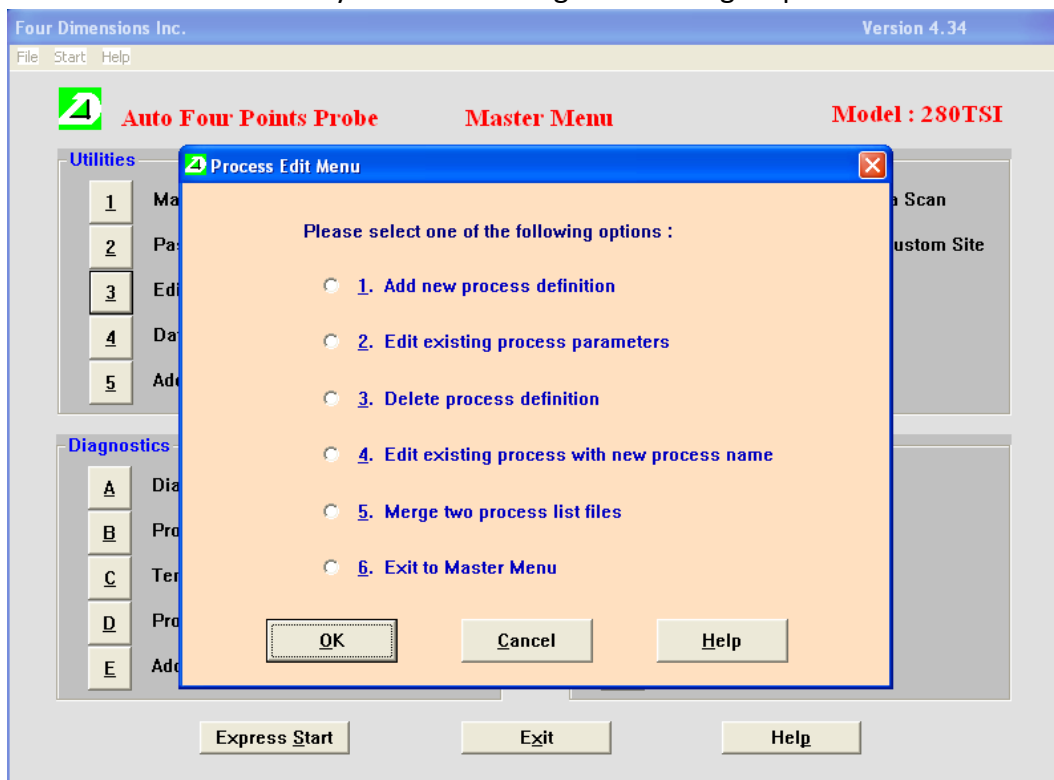
1. Turn on the system. Ensure that the adapter of the laptop is plugged in. Switch ON the automatic 4 probe system.
2. Login into the system : password : **cenitbombay**
3. Open the program su. Login id and password, both are **su**. This is how the interface would look like.



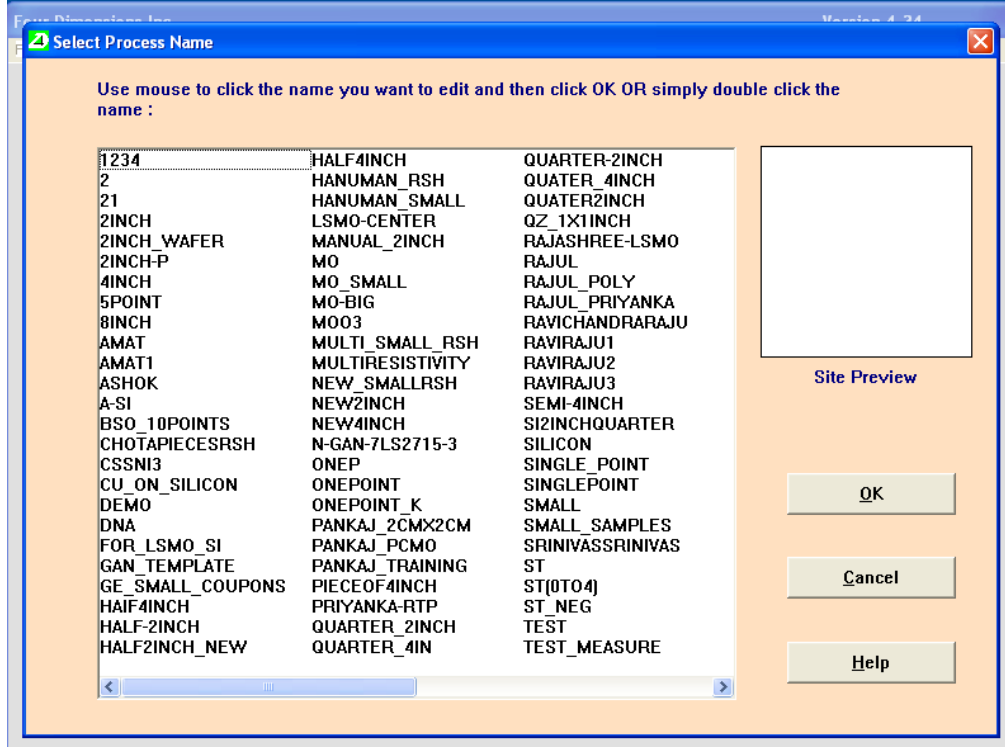
4. Now you can either continue with a predefined recipe or create a new recipe of your own for your measurements. It is advised to check the parameters of the recipe before using to verify if the parameters suit your type of measurement.
5. To edit any predefined process, select the highlighted option.



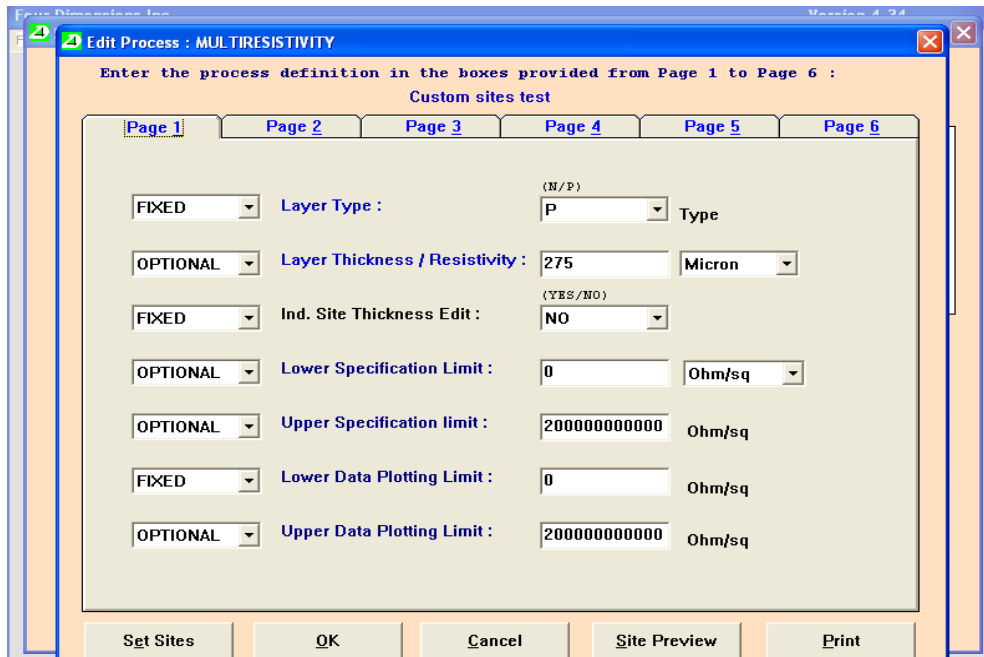
6. After you enter the edit process page, the interface would look something like this. Choose whatever suits you best. Editing or creating a process can be done here.



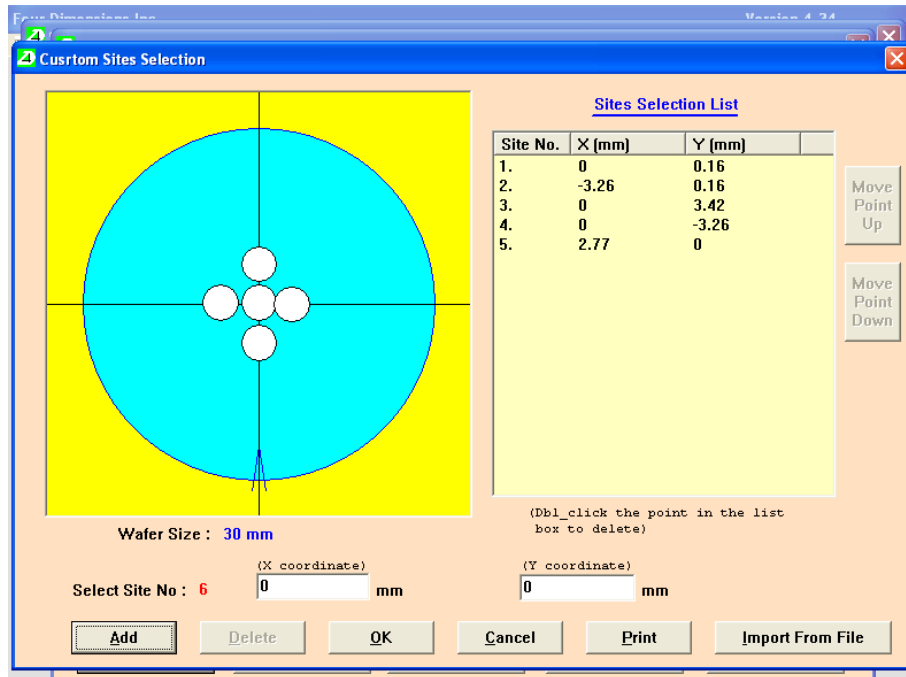
- Select edit a new recipe, if you need to edit one. A page with all the available recipes would be listed. You can choose any of the recipes to edit. It is highly advised not to edit someone else's recipe. Please create your own recipe if your measurements are something specific.



- Choosing any of the recipe will take you to the setup page where the different parameters need to be filled before you can start making measurements.

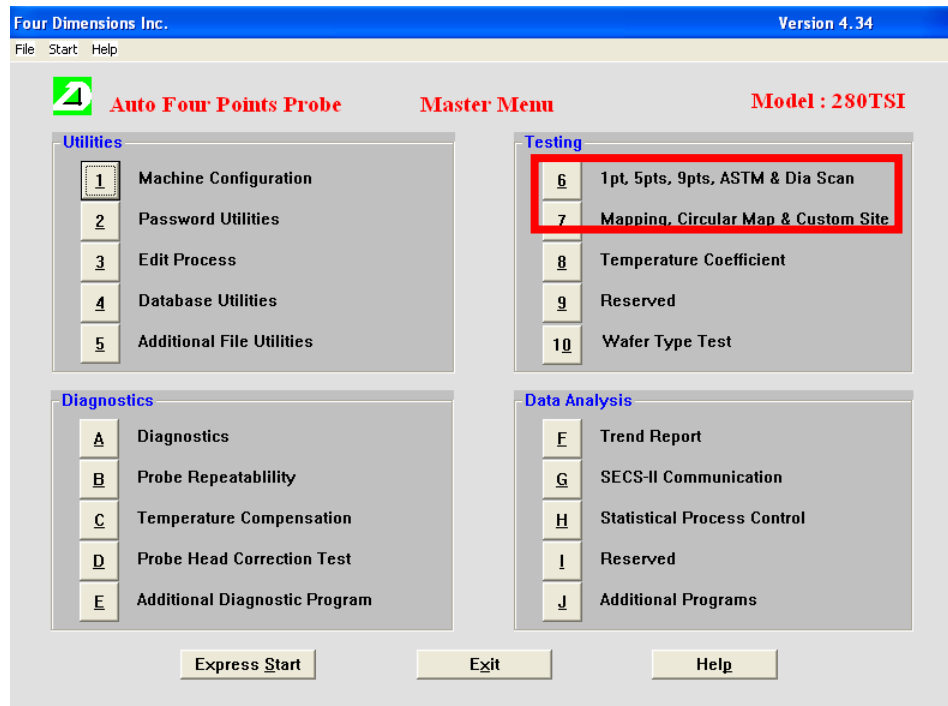


9. Fill up all the details and then Set sites for the measurement. Click OK to exit.



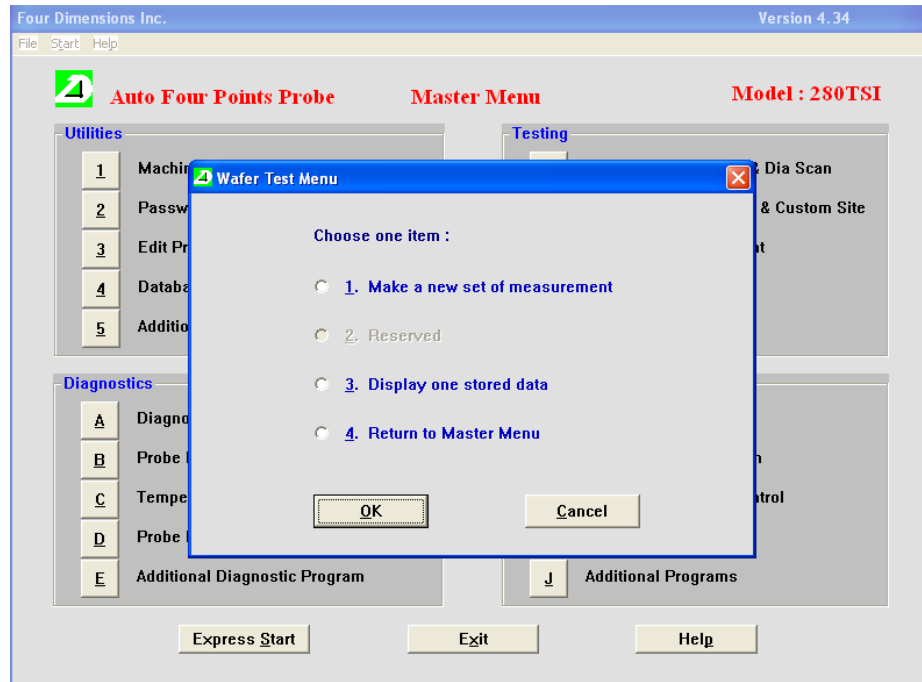
## 10. Making a Measurement

a. To enter the measurement menu, select any one of these

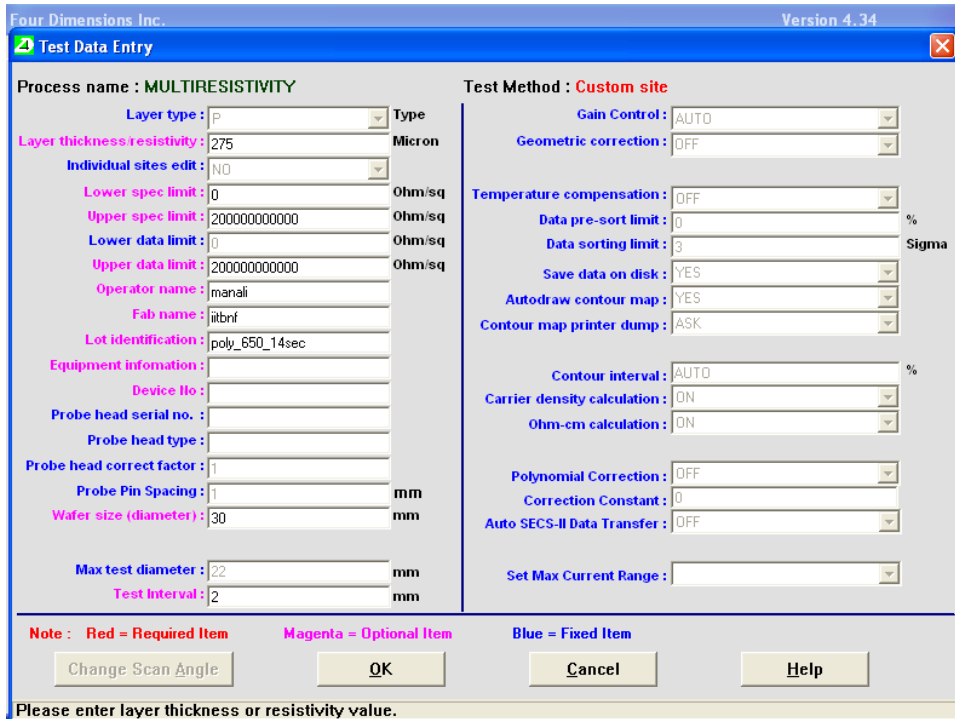


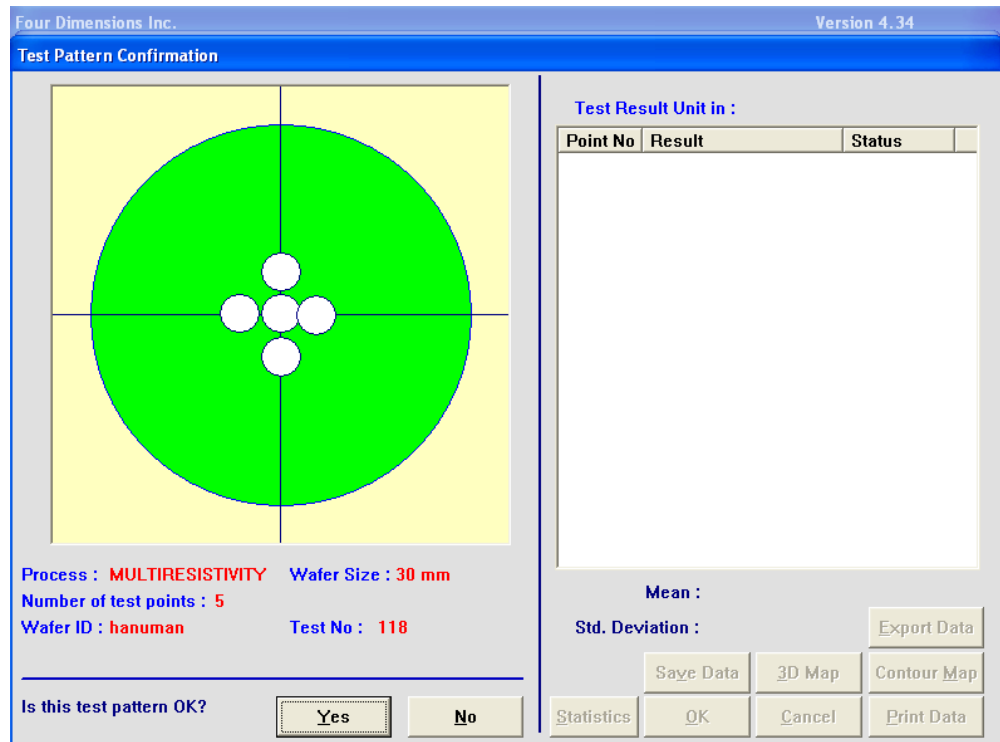
b. Entering the custom site menu will give a list of all the recipes that have been created in the system. The option 6 has predefined test points and it is advised not to use them if you don't have full wafer.

c. Enter option no 7. Next menu looks like this.



d. Enter “Make a new set of measurement”. The interface displays different sets of parameters that may or may not be varied depending on the setup. Please make sure of all the detail in the setup before proceeding to the measurement.





- e. Click on Yes to start measurement. Observe that the probes land on the sample and not on the mounting surface. If the probe tips are not landing on the sample, cancel the test immediately to avoid damaging the probetips.
  - f. Save the data as .txt or.xls. U can also save the wafer sheet map.
11. Post measurements, please log off from the software. Make an entry on online logbook (Slotbooking module).
  12. Shut down the system. Turn OFF all the switches.